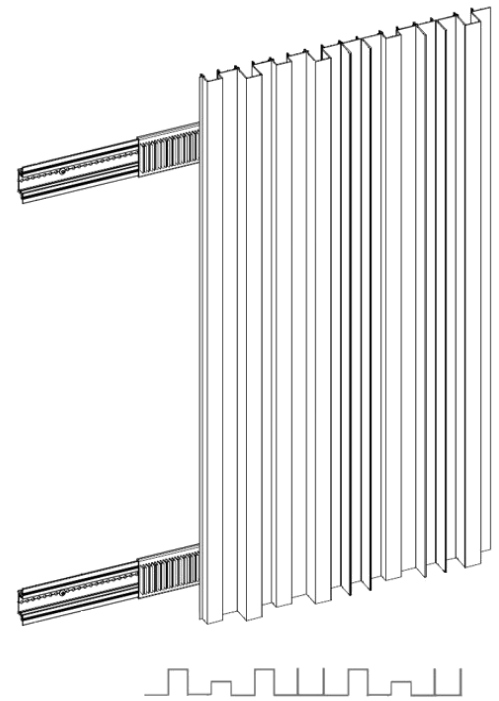


## Aluminum Profile cladding (APC):

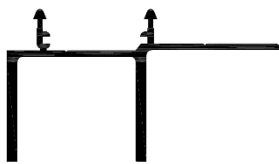
The facade cladding is constructed from an aluminum bearing structure that is fitted with plastic clips. The profiles can be easily mounted within this structure.



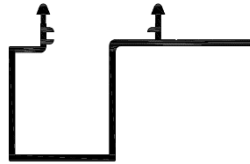
### Benefits:

1. CONCEALED FIXATION:
2. SLEEK LINES:
3. INDOOR & OUTDOOR USE
4. FAST INSTALLATION
5. SEAMLESS CORNER CONNECTIONS (optional).

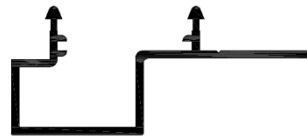
### Profiles and accessories:



2146



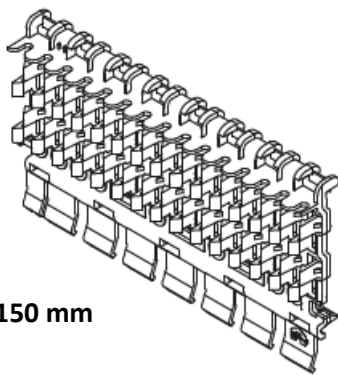
2147



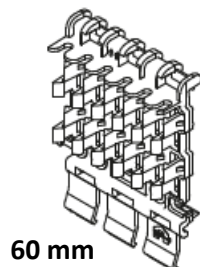
2148



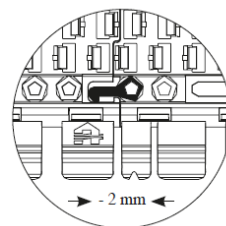
2149



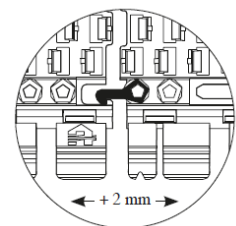
150 mm



60 mm

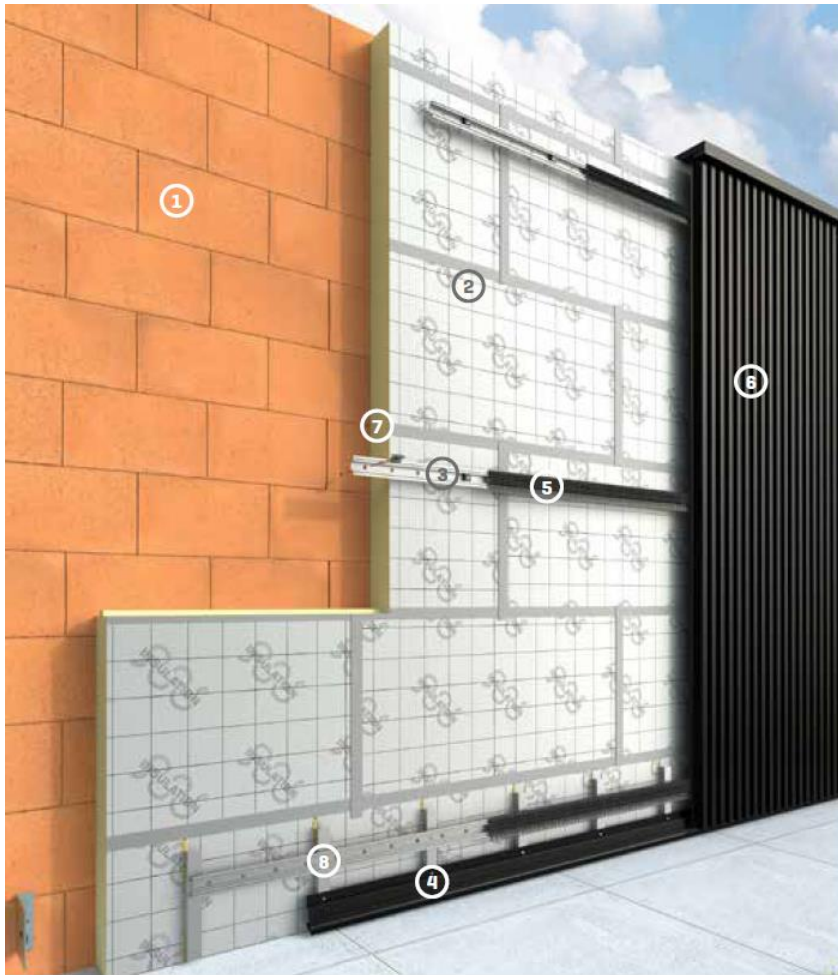


- 2 mm -

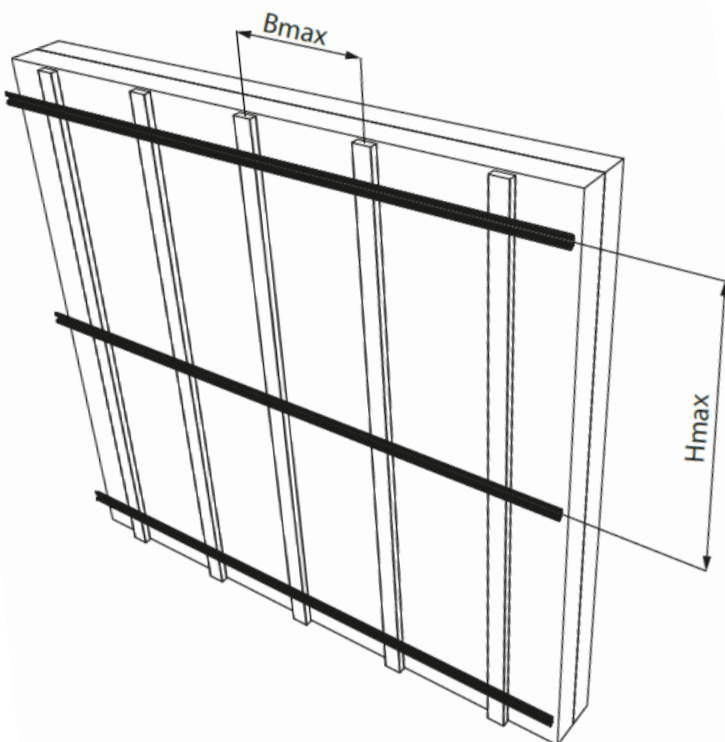


- + 2 mm -

## Installation:



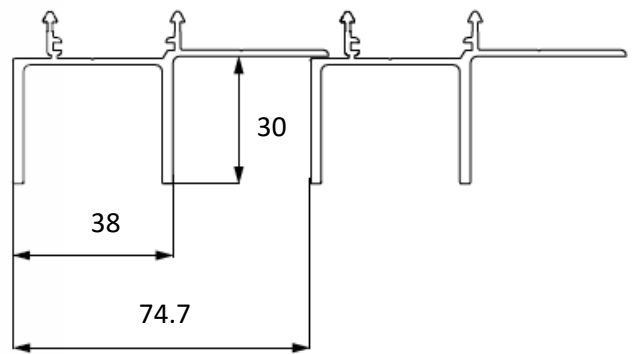
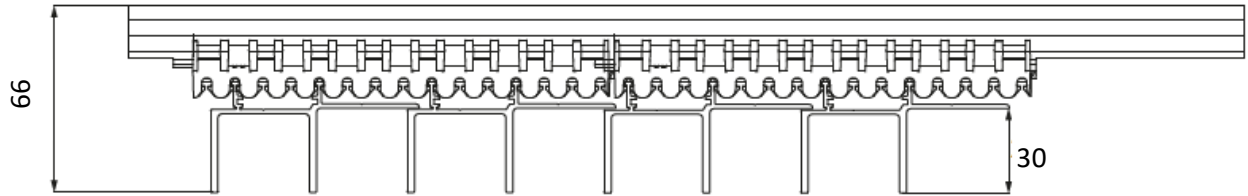
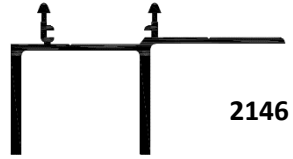
- ① Supporting wall
- ② Insulation
- ③ Perforated mullion
- ④ Supporting profile
- ⑤ Clips
- ⑥ Linarte profiles
- ⑦ Spacer screws and anchor plug
- ⑧ Supporting brackets

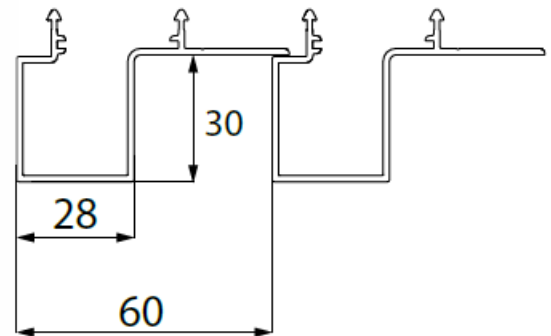
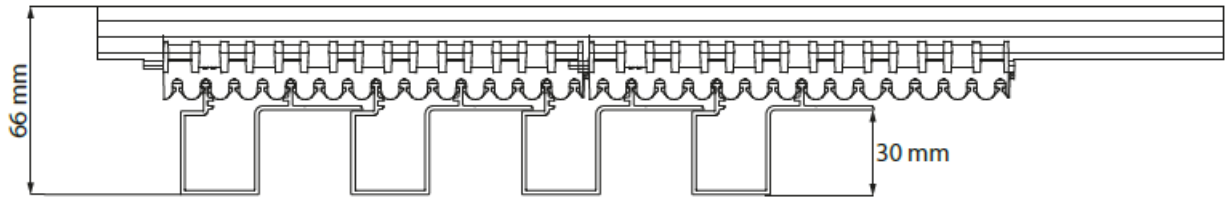
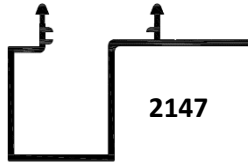


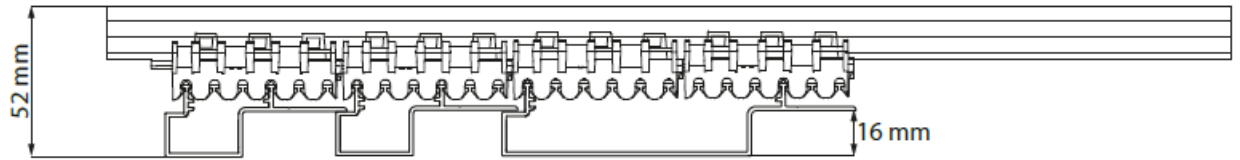
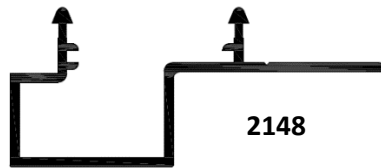
**Hmax:** Max. span between two horizontal supports.  
(1200mm)

**Bmax:** Max. span for fixing the supports to the  
underlying structure(600mm)

**Technical Details:**







Block 16

